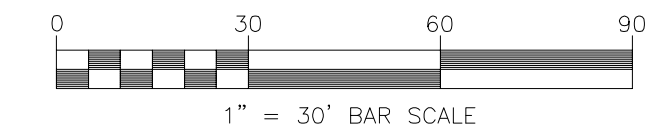
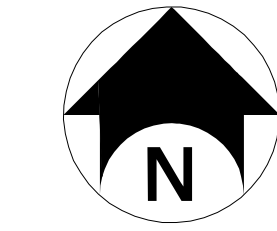
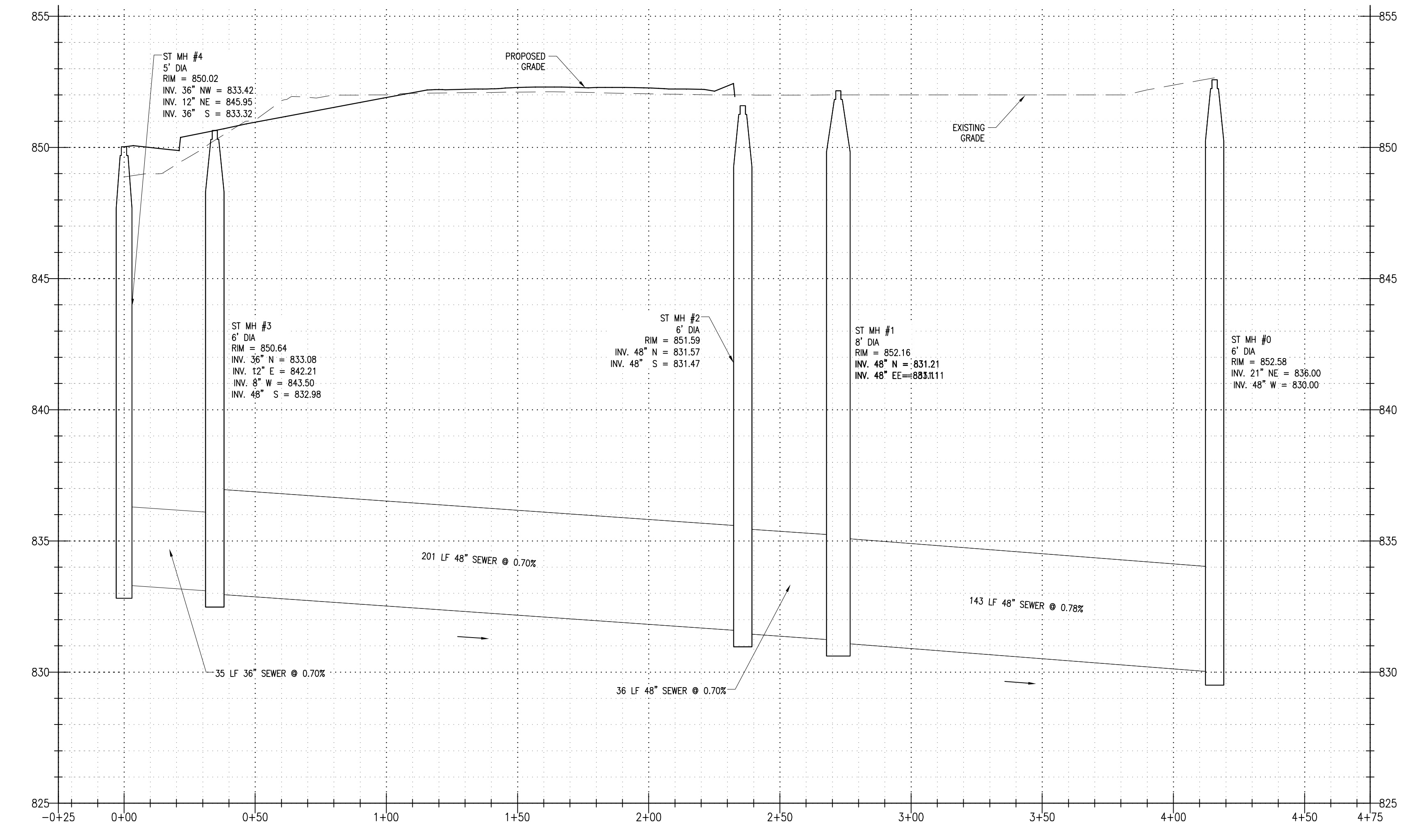


**BENCHMARKS:**

Benchmark #1: Big arm of fire hydrant on North side of Valley Court across from #248 West Grand River Avenue (car wash).  
 Elevation: 846.65  
 Benchmark #2: Big arm of fire hydrant on North side of intersection of Evergreen Avenue and Albert Avenue.  
 Elevation: 853.44

**UTILITY LEGEND**

- RIPRAP
- STORM SEWER
- CATCH BASIN
- STORM MANHOLE
- HYDRANT
- VALVE/CURB BOX
- WATER SERVICE
- SANITARY SEWER
- CLEANOUT



**Know what's below.  
 Call before you dig.**

NOT APPROVED:  
 THIS PLAN HAS NOT RECEIVED FINAL APPROVAL OF ALL REVIEWING AGENCIES. THIS PLAN IS SUBJECT TO REVISIONS UNTIL ALL APPROVALS ARE OBTAINED AND SHOULD NOT BE USED FOR CONSTRUCTION PURPOSES.

# Park District

EAST LANSING, MI 48823



2502 Lake Lansing Rd.  
 Ste C, Lansing,  
 MI 48912

**Bergmann**  
 associates  
 architects // engineers // planners

1427 West Saginaw Street, Suite 200  
 East Lansing, Michigan 48823

office: 517.272.9835  
 fax: 517.272.9836

www.bergmannpc.com

**REVISIONS**

NO.	DATE	DESCRIPTION	REV.	CK'D

## CROSS LOT SEWER PLAN AND PROFILE

Project Manager:  
**T. AREND**  
 Designed by:  
**P. FURTAW / A. NODARSE**  
 Drawn by:  
**A. NODARSE**  
 Checked by:  
**P. FURTAW**  
 Date Issued:  
 February 28, 2014  
 Scale:  
**1"=30' HORZ.; 1"=3' VERT.**

Project Number: **9843.00**  
 File Name: **C132.DWG**

Drawing Number:  
**C132**

C:\Users\pfnodarse\Documents\9843\9843-00\C132.dwg / P:\Projects\9843\9843-00\C132.dwg / P:\Projects\9843\9843-00\C132.dwg / P:\Projects\9843\9843-00\C132.dwg