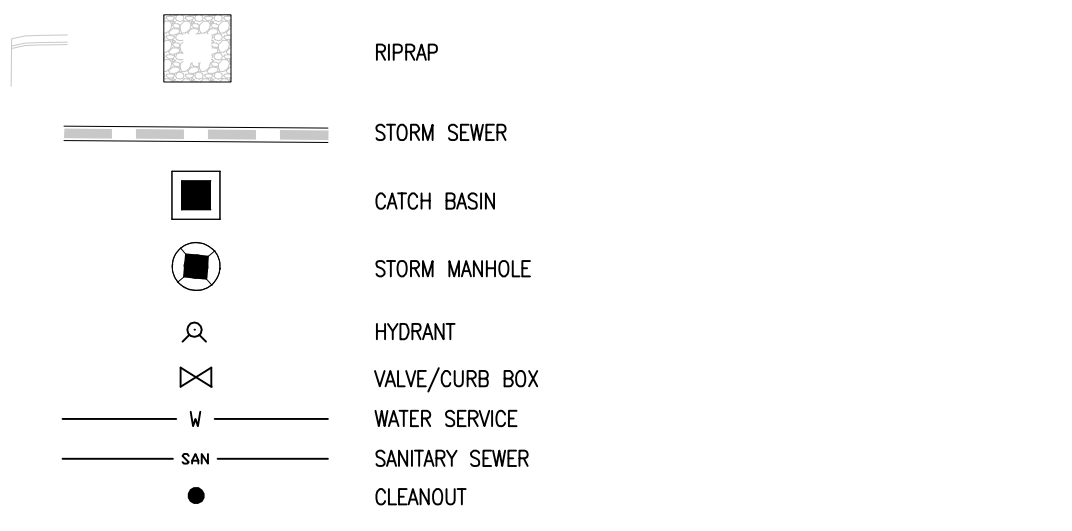


BENCHMARKS:

Benchmark #1: Big arm of fire hydrant on North side of Valley Court across from #248 West Grand River Avenue (car wash).
Elevation: 846.65
Benchmark #2: Big arm of fire hydrant on North side of intersection of Evergreen Avenue and Albert Avenue.
Elevation: 853.44

UTILITY LEGEND



Park District

EAST LANSING, MI 48823



2502 Lake Lansing Rd.
Ste C, Lansing,
MI 48912

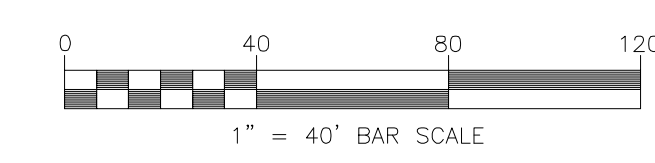
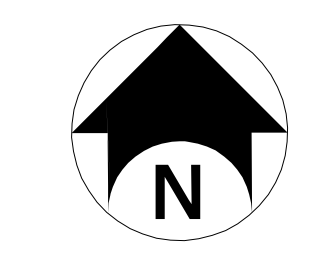
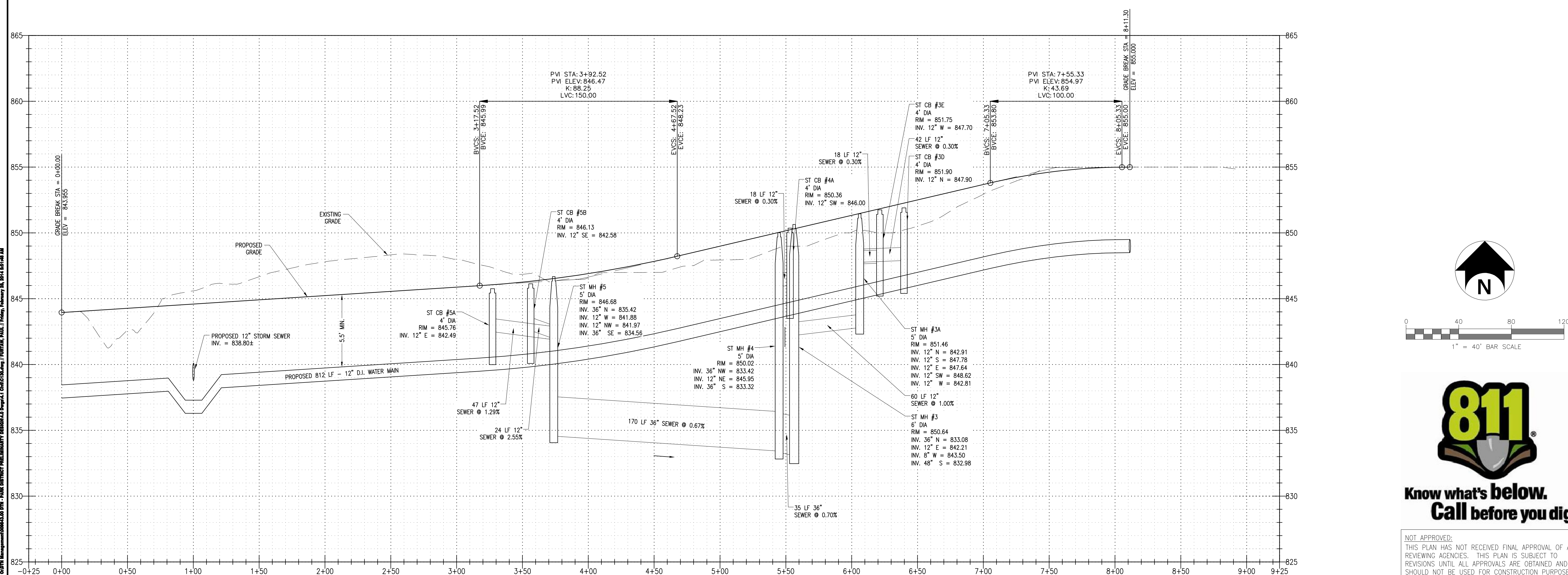
Bergmann
associates
architects // engineers // planners

1427 West Saginaw Street, Suite 200
East Lansing, Michigan 48823

office: 517.272.9835
fax: 517.272.9836

www.bergmannpc.com

REVISIONS			
NO.	DATE	DESCRIPTION	REV. CK'D



**Know what's below.
Call before you dig.**

NOT APPROVED:
THIS PLAN HAS NOT RECEIVED FINAL APPROVAL OF ALL REVIEWING AGENCIES. THIS PLAN IS SUBJECT TO REVISIONS UNTIL ALL APPROVALS ARE OBTAINED AND SHOULD NOT BE USED FOR CONSTRUCTION PURPOSES.

**ALBERT AVENUE
PLAN AND PROFILE**

Project Manager:
T. AREND
Designed by:
P. FURTAW / A. NODARSE
Drawn by:
A. NODARSE
Checked by:
P. FURTAW
Date Issued:
February 28, 2014
Scale:
1"=40' HORZ.; 1"=4' VERT.

Project Number:
9843.000
File Name:
C130.DWG

Drawing Number:

C130