

BENCHMARKS:

Benchmark #1: Big arm of fire hydrant on North side of Valley Court across from #248 West Grand River Avenue (car wash).
 Elevation: 846.65
 Benchmark #2: Big arm of fire hydrant on North side of intersection of Evergreen Avenue and Albert Avenue.
 Elevation: 853.44

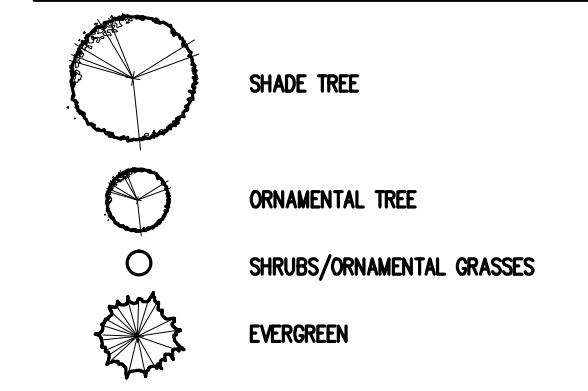
PLANT LIST:

Key	Scientific Name	Common Name	Size
AC	Abies concolor	White Fir	6' Ht. min.
AF	Abies fraseri	Frazier Fir	
AS	Acer saccharum 'Green Mountain'	Green Mountain Sugar Maple	3 1/2' cal min.
AG	Ametostichia x grandiflora 'Autumn Brilliance'	Autumn Brilliance Serviceberry	3 1/2' cal min.
CC	Crotophaga cruevelii var. inermis 'Crowsder'	Thornless Crowder Hawthorn	3 1/2' cal min.
GB	Ginkgo biloba 'Autumn Gold'	Autumn Gold Ginkgo	3 1/2' cal min.
GT	Gleditsia triacanthos var. inermis 'Skyline'	Skyline Honeylocust	3 1/2' cal min.
PG	Picea glauca 'Denata'	Black Hills Spruce	6' Ht. min.
PO	Picea omorika	Serbian Spruce	6' Ht. min.
PC	Pinus cembra	Swiss Stone Pine	6' Ht. min.
PS	Pinus strobus	Eastern White Pine	6' Ht. min.
PB	Platanus x acerifolia 'Bloodgood'	Bloodgood London Plane Tree	3 1/2' cal min.
PM	Pseudotsuga menziesii	Douglas Fir	6' Ht. min.
CS	Pyrus calleryana 'Cleveland Select'	Cleveland Pear	3 1/2' cal min.
TI	Tilia tomentosa 'Sterling'	Sterling Silver Linden	3 1/2' cal min.
QF	Quercus robur 'Fastigiata'	Columnar English Oak	3 1/2' cal min.
QR	Quercus rubra	Red Oak	3 1/2' cal min.
ZS	Zelkova serrata 'Village Green'	Village Green Zelkova	3 1/2' cal min.
BM	Buxus Microphylla 'Winter Gem'	Winter Gem Boxwood	36"
EA	Eryonimus Alocus 'Compacta'	Burning Bush	36"
JC	Juniperus ch. 'Sea Green'	Sea Green Juniper	36"
VP	Viburnum P.T. 'Mariesi'	Double File Viburnum	36"
CK	Calamagrostis 'Karl Foerster'	Karl Foerster Grass	5 gal.
PH	Pennisetum 'Hornet'	Dwarf Fountain Grass	5 gal.
PL	Pennisetum 'Little Bunny'	Little Bunny Grass	5 gal.

LANDSCAPING NOTES:

- ALL PLANTS MUST BE HEALTHY, VIGOROUS MATERIAL, FREE OF PESTS AND DISEASE.
- ALL PLANTS MUST BE SUITABLE FOR USE IN THE SOIL AND CLIMATE CONDITIONS OF THE PROJECT.
- ALL PLANTS MUST BE CONTAINER GROWN OR BALLED AND BURLAPPED AS INDICATED IN THE PLANT LIST.
- ALL TREES MUST BE STRAIGHT TRUNKED AND FULL HEADED AND MEET ALL REQUIREMENTS SPECIFIED.
- MULCH ALL PLANTINGS WITH SHREDDED HARDWOOD BARK MULCH, TO A MINIMUM DEPTH OF FOUR INCHES.
- THE CONTRACTOR IS RESPONSIBLE FOR VERIFYING ALL QUANTITIES SHOWN ON THESE PLANS BEFORE PRICING THE WORK.
- THE CONTRACTOR IS RESPONSIBLE FOR FULLY MAINTAINING ALL PLANT MATERIALS (INCLUDING BUT NOT LIMITED TO: WATERING, SPRAYING, MULCHING, FERTILIZING, ETC.) AND LAWN AREAS UNTIL THE WORK IS ACCEPTED IN TOTAL BY THE OWNER.
- ANY PLANT MATERIAL WHICH DIES, TURNS BROWN, OR DEFOLIATES (PRIOR TO TOTAL ACCEPTANCE OF THE WORK) SHALL BE PROMPTLY REMOVED FROM THE SITE AND REPLACED WITH MATERIAL OF THE SAME SPECIES, QUANTITY, AND SIZE MEETING ALL PLANT LIST SPECIFICATIONS.
- THE CONTRACTOR SHALL COMPLETELY GUARANTEE ALL PLANT MATERIAL FOR A PERIOD OF TWO (2) YEARS BEGINNING ON THE DATE OF TOTAL ACCEPTANCE. THE CONTRACTOR SHALL PROMPTLY MAKE ALL REPLACEMENTS BEFORE THE END OF THE GUARANTEE PERIOD.
- STANDARDS SET FORTH IN "AMERICAN STANDARD FOR NURSERY STOCK," ANSI Z60.1 (LATEST EDITION), REPRESENT GUIDELINE SPECIFICATIONS ONLY AND SHALL CONSTITUTE MINIMUM QUALITY REQUIREMENTS FOR PLANT MATERIAL.
- LOCATIONS OF EXISTING BURIED UTILITY LINES SHOWN ON THE PLANS ARE BASED UPON BEST AVAILABLE INFORMATION AND ARE TO BE CONSIDERED APPROXIMATE. IT SHALL BE THE RESPONSIBILITY OF THE CONTRACTOR TO VERIFY THE LOCATIONS OF ALL UNDERGROUND UTILITY LINES ADJACENT TO THE WORK AREA. THE CONTRACTOR IS RESPONSIBLE FOR THE PROTECTION ALL UTILITY LINES DURING THE CONSTRUCTION PERIOD. THE CONTRACTOR SHALL BE RESPONSIBLE FOR REPAIRING ANY AND ALL DAMAGE TO UTILITIES, STRUCTURES, AND SITE APPEARANCES, ETC., WHICH OCCURS AS A RESULT OF THE LANDSCAPE CONSTRUCTION.
- ALL SHRUB PLANTING BEDS SHALL BE HAND SPADE OUT.
- ALL DISTURBED/UNSURFACED AREAS SHALL RECEIVE TOPSOIL TO A COMPACTED DEPTH OF 4", SEED, MULCH, AND WATER UNTIL A HEALTHY STAND OF GRASS IS OBTAINED.

LEGEND



Park District
 EAST LANSING, MI 48823



2502 Lake Lansing Rd.
 Ste C, Lansing,
 MI 48912

Bergmann
 associates
 architects // engineers // planners

1427 West Saginaw Street, Suite 200
 East Lansing, Michigan 48823

office: 517.272.9835
 fax: 517.272.9836

www.bergmannpc.com

REVISIONS			
NO.	DATE	DESCRIPTION	REV. CK'D
06/30/14		SPR SUBMITTAL	

**PRELIMINARY
 LANDSCAPE PLAN**



**Know what's below.
 Call before you dig.**

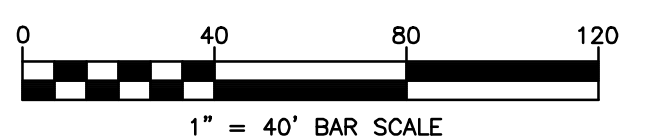
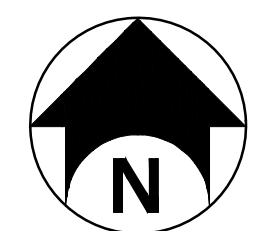
NOT APPROVED:
 THIS PLAN HAS NOT RECEIVED FINAL APPROVAL OF ALL REVIEWING AGENCIES. THIS PLAN IS SUBJECT TO REVISIONS UNTIL ALL APPROVALS ARE OBTAINED AND SHOULD NOT BE USED FOR CONSTRUCTION PURPOSES.

Project Manager:
 Designed by:
P. FURTAW
 Drawn by:
A. NODARSE
 Checked by:
P. FURTAW
 Date Issued:
 February 28, 2014
 Scale:
1" = 40'

Project Number:
9843.00
 File Name:
L100DTR.DWG

Drawing Number:

L100



© DTP Management/Design/Construct, Inc. PARK DISTRICT PRELIMINARY DESIGN/CONSTRUCTION PLAN. (REVISED) DATE: 06/30/14. PROJECT: VALLEY COURT PARK. DRAWN BY: A. NODARSE. CHECKED BY: P. FURTAW. DATE ISSUED: FEBRUARY 28, 2014. SCALE: 1" = 40'.